

# BOOKHILL PARK IMPROVEMENTS COMMUNITY MEETING

WEDNESDAY, OCTOBER 8  
6:00 – 7:30 pm



**DPR**  
DC DEPARTMENT OF PARKS AND RECREATION

**DGS**  
DEPARTMENT OF  
GENERAL SERVICES

**BUILD  
MAINTAIN  
SUSTAIN**



GOVERNMENT OF THE  
DISTRICT OF COLUMBIA  
**DC** MURIEL BOWSER, MAYOR



# RULES OF THE ROAD

---

# WELCOME!

THANK YOU FOR YOUR PARTICIPATION

- Please take a photo of the QR Code to sign in for our email list for this project.
- Be courteous
- Respect others
- Allow space for all to speak
- We'll do the best we can to answer all questions
- If there are any questions we cannot answer at this time, we will follow-up after this meeting



# MEETING AGENDA

---

- 1 Introduction
- 2 Project Scope & Budget
- 3 Design Presentation
- 4 Project Timeline
- 5 Contact Information
- 6 Question and Answer





# DC GOV TEAM MEMBERS

---



**SHAYDA MUSAVI**  
Project Manager  
**DPR**



**CHRISTOPHER DYER**  
Community  
Engagement Manager  
**DPR**



**VICTOR MEDINA**  
Project Manager  
**DGS**



**JOHN STOKES**  
External Affairs  
**DGS**



**CHARLEE BELL**  
External Affairs  
**DGS**



# DESIGN-BUILD TEAM MEMBERS

---



**MOE FRIDY**  
Citadel DBD



**AMAN APHRAIM**  
Project Manager  
Citadel DBD



**HYUN KIM**  
Project Architect  
Citadel DBD



# PROJECT OVERVIEW

---



## PROJECT BUDGET

\$300,000.00



## OBJECTIVE

The project goal is to improve circulation, safety, and incorporate new design features at Book Hill Park.

Site improvements include a new handrails along the existing stairs, stair lighting, new site furniture, repairs to the brick path and hilltop green space, a potential new plaza space, repairs to existing water spigot, a potential second water spigot.

## PROPOSED SITE FEATURES:

- New stair handrail
- New stair lighting
- Repairs to existing stairs, green space , and paving
- New site furniture and bike racks
- New plantings
- New DPR signage
- Repair existing water spigot and potential second location of new water spigot
- Potential new plaza space



# CONCEPT PLAN

- A** Plaza Option A
- B** Plaza Option B
- C** Plaza Option C
- D** New lighting at stair
- E** New steel handrail along both sides of stair
- F** New benches and tables with seats. Existing plaques to be relocated to new benches.
- G** Repair and re-sod grassy area and repair brick pathway
- H** New bike rack and trash and recycling receptacles
- I** No work in area shown in dark gray

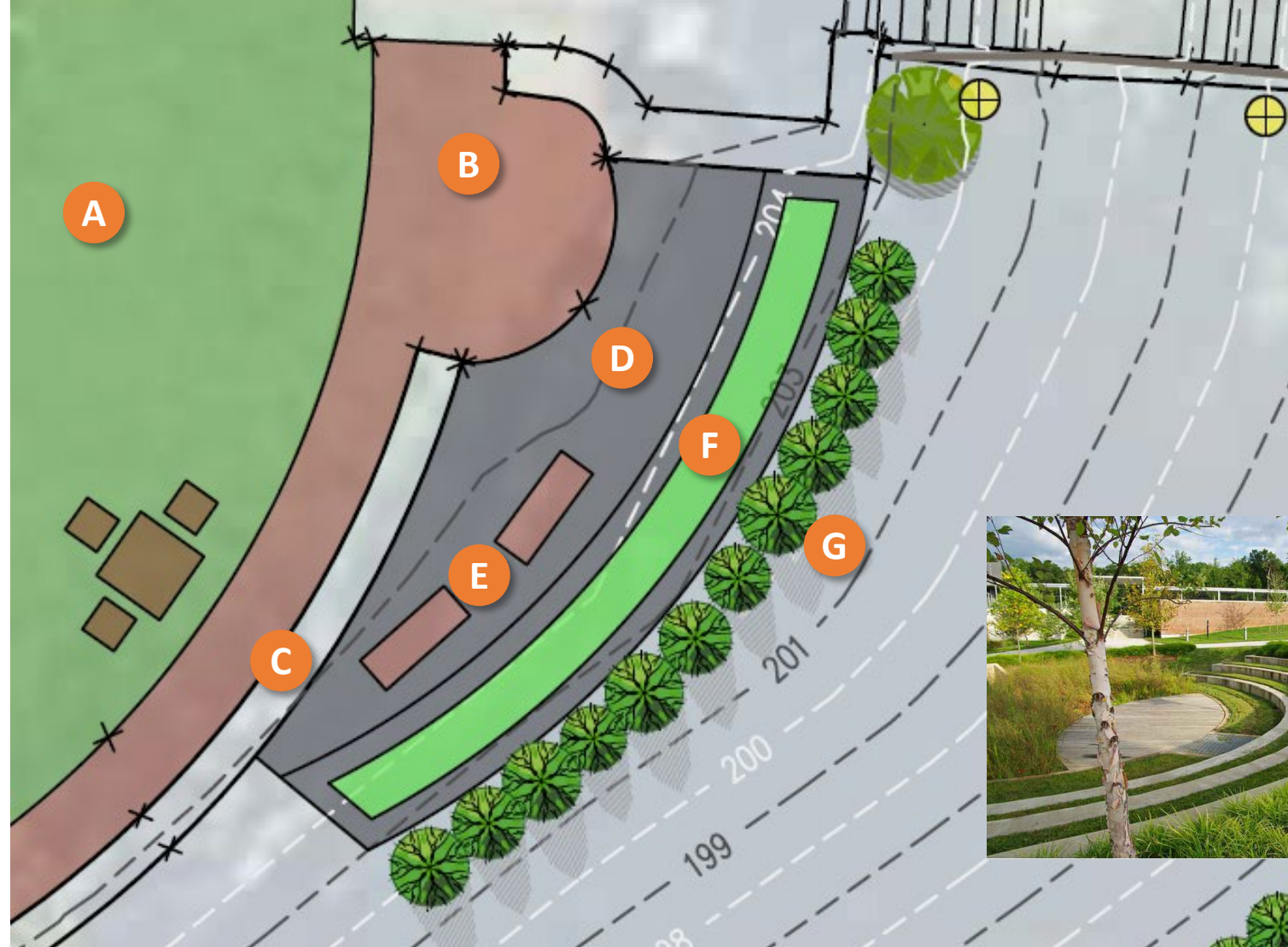


*These are illustrative conceptual plans and not meant for construction. All concepts are contingent on project budget, and district and site restrictions*



# CONCEPT PLAN – PLAZA OPTION A

- A** Existing grassy area to be resodded
- B** Repair existing brick pathway
- C** Existing stone wall
- D** New plaza area with concrete paver surface
- E** New benches
- F** New concrete retaining walls with grassy seating area
- G** New shrub plantings



*These are illustrative conceptual plans and not meant for construction. All concepts are contingent on project budget, and district and site restrictions*



# CONCEPT PLAN – PLAZA OPTION B

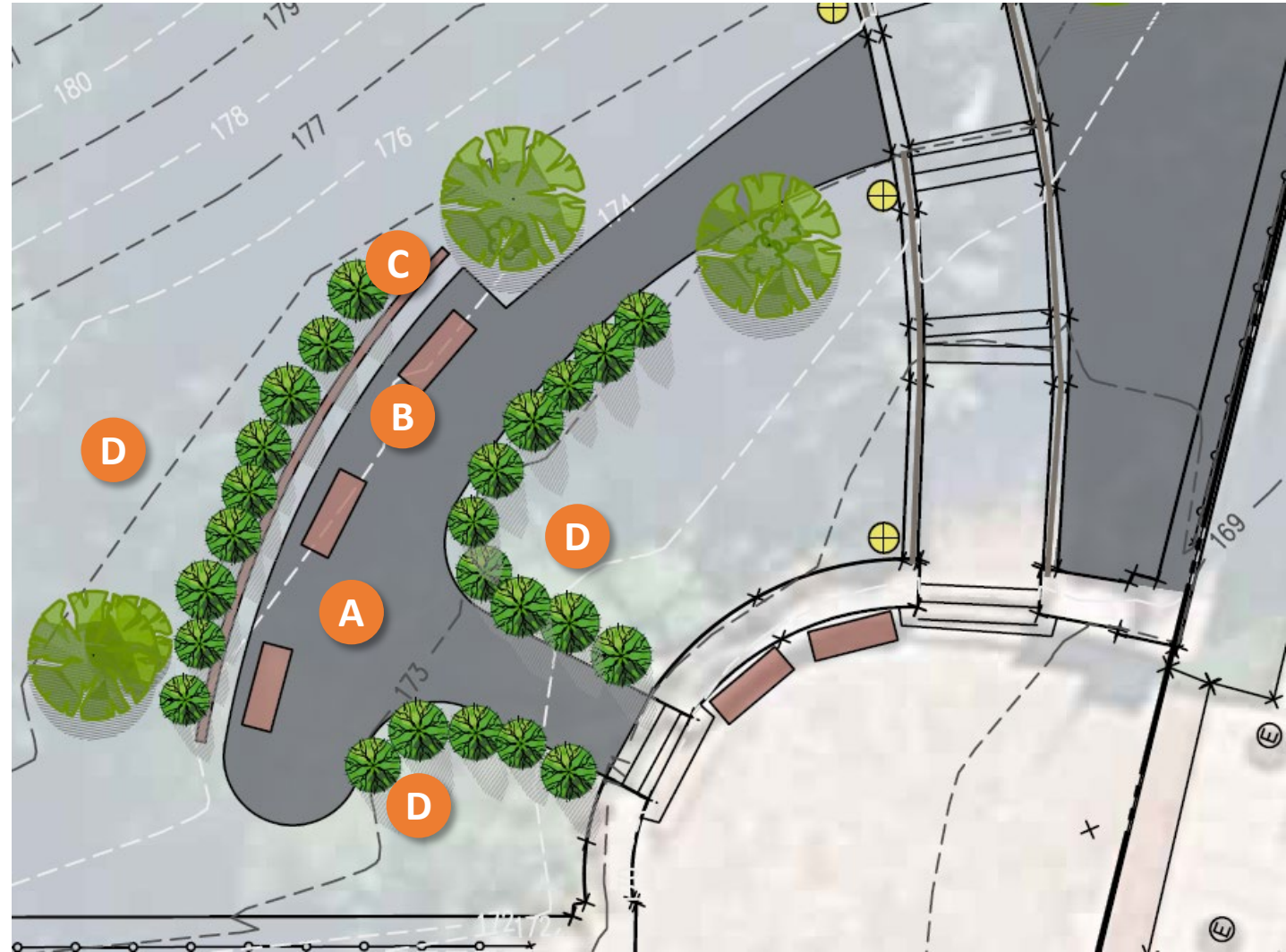
- A** New concrete paver pathway
- B** New concrete stairs
- C** New two-tier concrete retaining wall with grassy seating area
- D** New shrub plantings
- E** Protect existing tree with plaque



*These are illustrative conceptual plans and not meant for construction. All concepts are contingent on project budget, and district and site restrictions*

# CONCEPT PLAN – PLAZA OPTION C

- A** New concrete paver plaza and pathway
- B** New benches
- C** New stone retaining wall to match existing
- D** New shrub plantings



*These are illustrative conceptual plans and not meant for construction. All concepts are contingent on project budget, and district and site restrictions*



# MEMORIAL PLAQUES

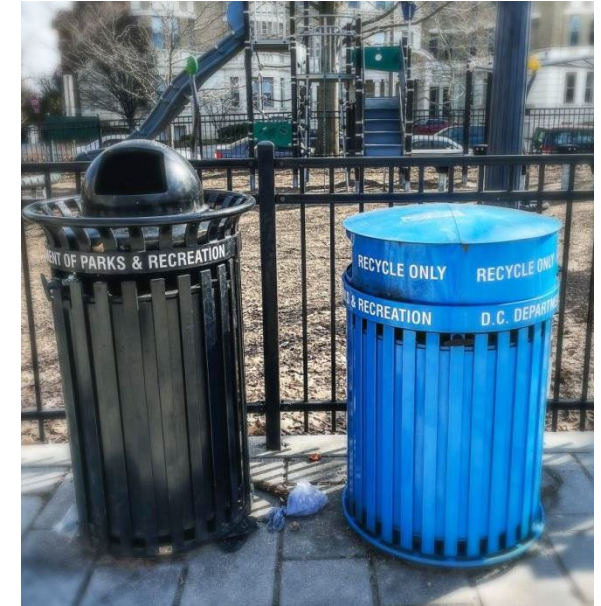
- Memorial plaque locations may be affected by design and installation of new benches. Garden plaques shall be relocated within the park and bench plaques shall be relocated to new benches in the same locations as the original benches.

- A** Park bench plaques
- B** Tree plaque
- C** Stone wall plaque
- D** Ground plaques





# SITE FURNISHINGS



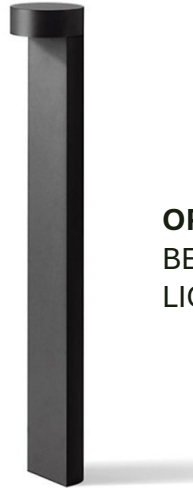
- New benches, tables, iron handrails, trash and recycling receptacles, bike racks



# SITE PATH LIGHTING OPTIONS



**OPTION A**  
VISCO CAST IRON  
LIGHT, 27" H  
(BLACK)



**OPTION B**  
BEGA GARDEN  
LIGHT, 27" H



**OPTION C**  
KICHLER COOPER  
PATH LIGHT, 22" H



**OPTION D**  
HINKLEY DAWSON  
POST LIGHT, 48" H



**OPTION E**  
HINKLEY RALEY  
PATH LIGHT, 22" H



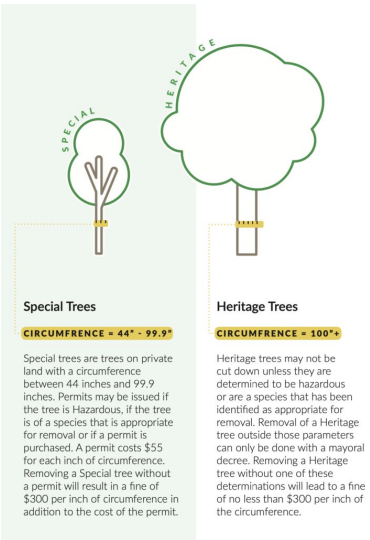
**OPTION F**  
HINKLEY  
WILLOUGHBY  
POST LIGHT, 44" H



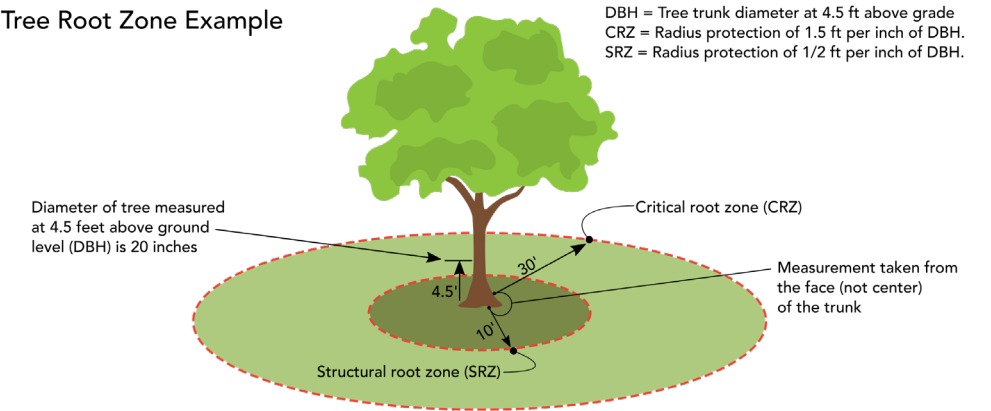
**OPTION G**  
HINKLEY FREEPORT  
POST LIGHT, 36" H

*Lighting options are contingent on project budget, and district and site restrictions.*

# TREE PROTECTION AND TREATMENT



Tree Root Zone Example



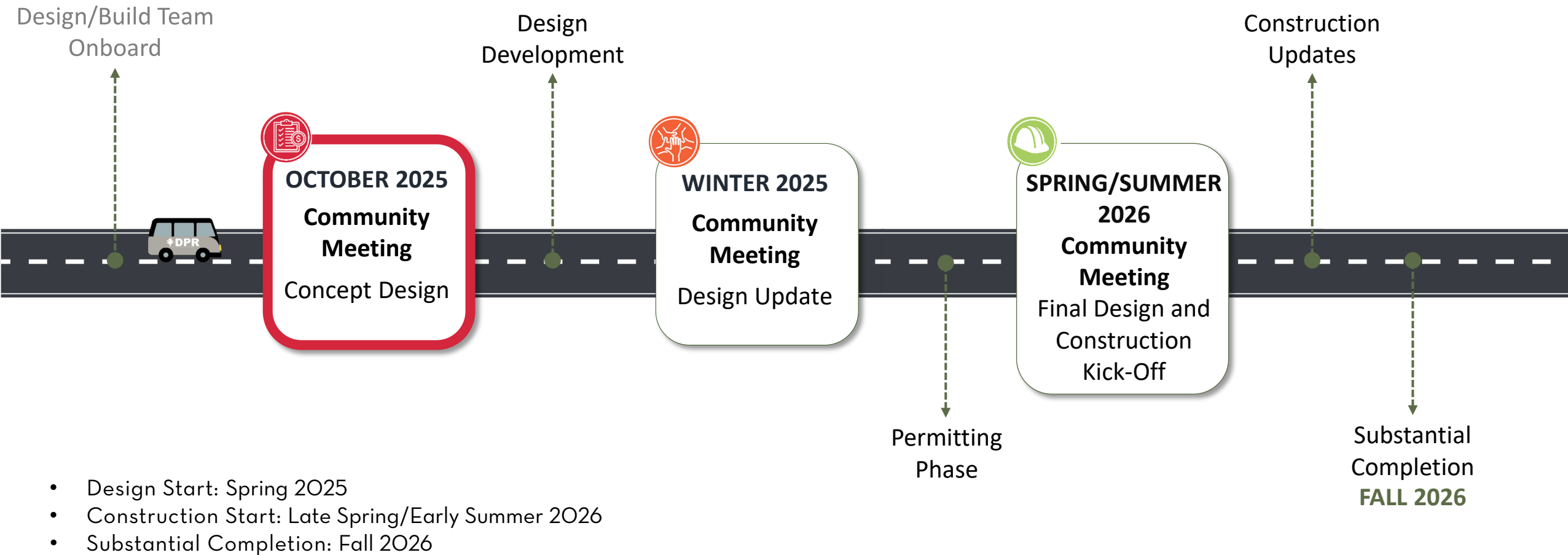
District Department of Transportation  
Urban Forestry Division

trees.dc.gov

d.



# PROJECT MILESTONE TIMELINE



# CONTACT INFORMATION

---

## DEPARTMENT OF PARKS & RECREATION (DPR)

**Christopher Dyer** | Community Engagement and Outreach

[christopher.dyer@dc.gov](mailto:christopher.dyer@dc.gov)

## DEPARTMENT OF GENERAL SERVICES (DGS)

**Charlee Bell** | Community Engagement and Outreach

[charlee.bell2@dc.gov](mailto:charlee.bell2@dc.gov)

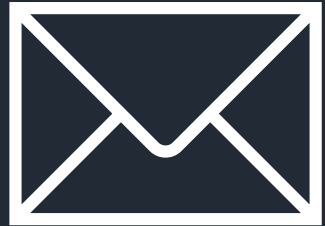
## PROJECT WEBSITE:

<https://dgs.dc.gov/page/book-hill-park-improvements>

JOIN OUR EMAIL LIST



Email List Sign-in  
[DPR.DC.GOV/ATTENDEE](https://dpr.dc.gov/attendeec)







# THANK YOU

## QUESTIONS?